



MI SUGAR WAVES

SUGAR WAVES

LONG LAYERS ENHANCED WITH FLOWING SOFT WAVES: WORN LOOSE.



Dasha has very long, thick hair with a porous texture.

TIPS & TRICKS

Teach your clients how to best use their hair dryer, straightener or other hot tool. Using the right styling products and tools can make a huge difference in your clients' daily routines and drive your in-salon sales.

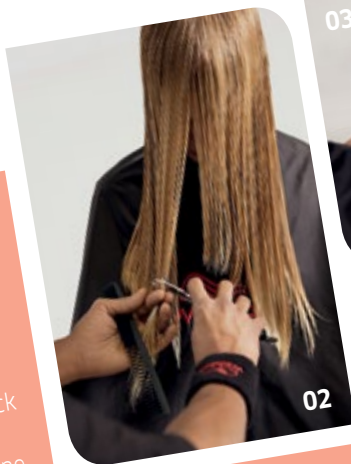


01

CUT

CUT 01

First apply Enrich Leave In Balm as a cutting lotion. Then, take a triangle section on the top, down to the occipital. Cut in one block and point cut. Use the top section as a guideline and connect the hair to the bottom sections by taking vertical sections.



02

CUT 02

Over-direct the hair forward and cut with a razor.



03

CUT 03

Working from the center back create a connection between both sides.

STYLING



01

STYLING 01

To create volume at the roots apply Sugar Lift and blow dry the hair with a Wella Round Brush and Wella Sahira hairdryer.

Use the Wella Style Iron to create movement, then create a soft, flawless finish by applying Perfect Me to the mid-lengths and ends.



02

