

EI BOHO
MI LIFT



BOHO LIFT

A LONG MODERN BOB WITH A VINTAGE UNDONE UP-DO.



Yue Ning has very thick, flat long Asian hair (below shoulder length).

TIPS & TRICKS

Do you ever ask your clients why they want a haircut that doesn't need any styling? Most of the time clients expect a cut that doesn't require any styling – because they don't know how to style their hair.

CUT



01

CUT 01

Hold the razor flat onto the section to create length that feels modern and irregular.



02

CUT 02

Section above the occipital at a 45 degree angle and cut the hair.



03

CUT 03

Slice-cut to create multi-effect texture. Repeat throughout the sides.

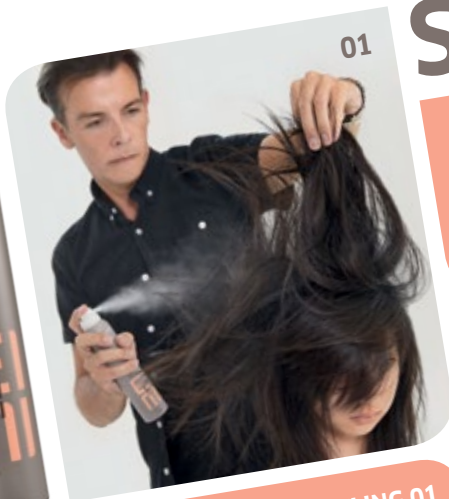


04

CUT 04

Take the front section and cut a c-curve for a strong focal point.

STYLING



01

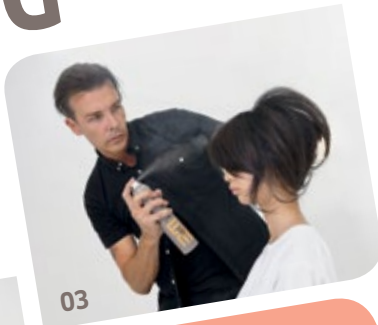
STYLING 01

To prep the style, apply Extra Volume all over the hair. After blow drying the hair, apply Dry Me and back comb to get maximum volume.

STYLING 02
With your hands, start moulding backwards and twist the bottom into a 50s style pleat.



02



03

STYLING 03

With your fingers, loosen up the structure to create an undone finish. Then, fix the look with with Super Set.

