



EI TEXTURE
MICRUSH

TEXTURE CRUSH

HIGH-PRECISION UNDERCUT WITH FEMININE TEXTURE: THE RE-IMAGINED PIXIE.



BEFORE

Harmony has good quality short hair with medium thickness and is a natural level 7.

CUT



01

CUT 01 Section occipital bone using precision cutting; Follow the head shape. Finish with scissors-over-comb - leaving the hair line shattered. Work the same through the sides.



03

CUT 03 Take random sections, lifting up to a 45 degree angle. Point cut to create a very self-cut, erratic and undone fringe: creating the modern Pixie.

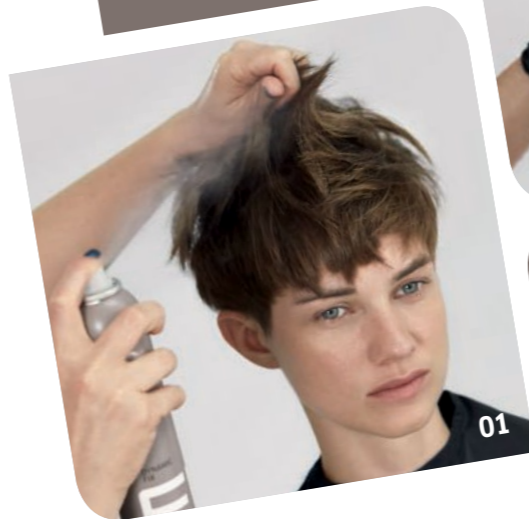


02

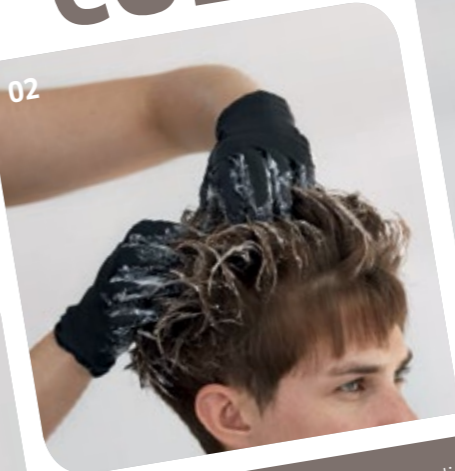
CUT 02 Blend top through back section with point cutting. Keep the side lengths to create a slight undercut. Personalize by slice-cutting for texture.

COLOR

COLOR TIPS
01 Using Dynamic Fix, spray at the roots and backcomb to keep the hair up.

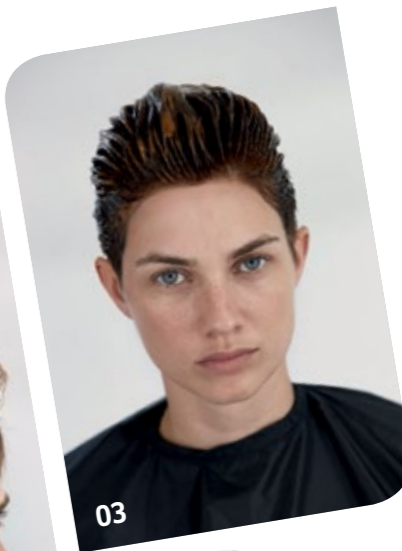


02



02 Apply Freights with 9% Freights Developer and scrunch the hair. Leave for 30 minutes to develop.

03 Rinse and tone the hair with Instamatic Mauve + 1.9% Color Touch Emulsion (1:1 mixing ratio).



03



STYLING



01

STYLING 01 Blow dry the hair with a Wella Flat Brush and Wella Sahira hairdryer to flatten the hair.



02

STYLING 02 Perfect the finish with Wella Style.



03

STYLING 03 Warm a small amount of Texture Touch in your hands and apply all over to create a crushed matte texture.





ATT-HAN

S/M