



ERUFFLE
micut

RUFFLE CUT



Rui has thick, dense European textured hair and is a natural level 4.

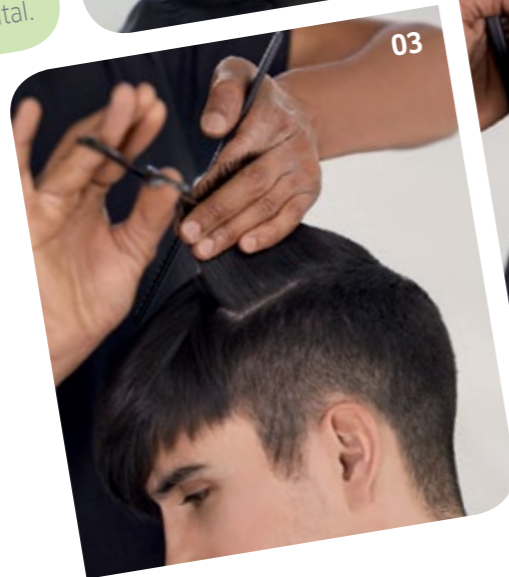
UNDERCUT AND DISCONNECTED: MADE INDIVIDUAL WITH BARBER-STYLE TEXTURE RUFFLE.

CUT

CUT 01
Create a horseshoe section down to the occipital.



01



03

CUT 02
Cut the sides and back with a Wella Xpert 8 at 4mm length.



02

CUT 03
Cut the top using point cut with a vertical section, disconnecting from sides to top. Cut short lengths at the back to long lengths at the front.

STYLING

STYLING 01
Flatten the hair with a Wella Flat Brush in combination with a Wella Sahira hairdryer.



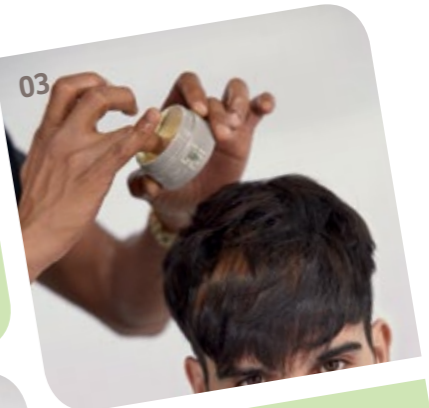
01

STYLING 02
Perfect the finish with Wella Style and texturize the hair as you wish.



02

STYLING 03
Take a small amount of Grip Cream, warm up in between your palms and apply all over to create a ruffled look.



03

COLOR TIP

To create a multifaceted color, take a section at the top of the head and apply Magma /17 with 12% Freelights Developer. Then, play with an alternating combination of Freelights + 12% Freelights Developer & Magma /17 + 12% Freelights Developer.

APPLICATION TIP

For a blended effect, Balayage with the angle of the tint brush.



COLOR

TECHNIQUE TIP
Make a waved section on the top of the head and spray with Super Set to keep the hair up.



