

DISTILLED **BLACK**

An expressive, statement look with a deep frame that allows the softened lights to come through.



COLOR



BEFORE COLOR FORMULAS

A. Koleston Perfect 6/75
+ 7/75 2:1 + 9% Welloxon Perfect + Color.id
B. Koleston Perfect 2/0 + 6% Welloxon
Perfect + Color.id

COLOR PLACEMENT:

1▶

Create a zigzag section around the fringe and ears. Section the nape area just below the occipital.



▶2

Apply Formula A to the roots of the back zigzag section first. Then apply to mid-lengths and ends.

▶3

Apply Formula B to roots to end in the front section, sides and nape.



▶4

Continue to apply Formula B to sides and nape.

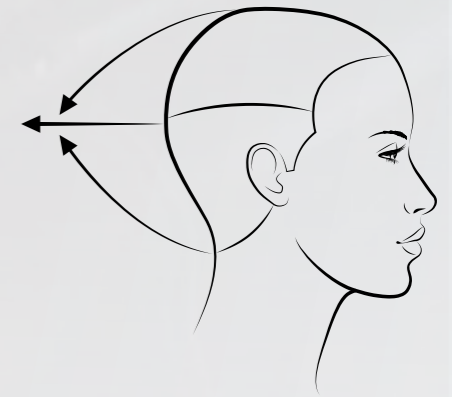
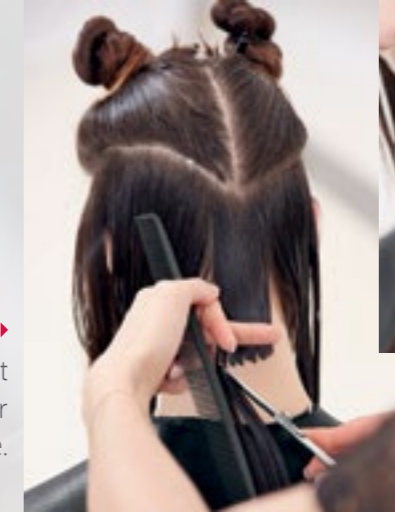


CUT



1▶

Create the base length at sides & nape. Point cut for a soft line.



▶2

Graduate at 45 degrees to create softness.



▶3

Working to the top of the head, continue to bring sections down and cut to base length. To soften the back and sides, continue with the horizontal graduation at 90 degrees.



▶4

Bring the top section down and cut to base line.



STYLING

Use Velvet Amplifier to prep the hair before blow-drying.



NOTES

ALTERNATIVE FORMULAS

Koleston Perfect Innosense 2/0
Color Touch 2/0
Koleston Perfect Innosense 6/7
Illumina Color 6/76