

Brown Silk Step-by-Step Technique

Create texture within full head color that will complement the hair's natural movement and haircut. This technique is best suited to medium-to-longer lengths of hair containing long layers. Best results will be seen on hair which has some natural movement.



HAIR CONDITION: DRY, DAMAGED / **STARTING LEVEL:** 6 / **PREVIOUS HAIRCOLOR:** LIGHTENED / **HAIR LENGTH:** SHOULDER LENGTH WITH SOME LAYERS / **TARGET RESULT:** RICH BROWN WITH LIGHTER PANELS TO CREATE TEXTURE / **TECHNIQUE:** BROWN SILK

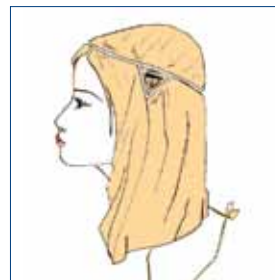
STEP BY STEP



Step 1 Take a medium triangular section on top of the head. This section should be at an angle and set back slightly from the hairline.



Step 2 Take a large triangular section at the back of the head around the occipital bone.



Step 3 Take a small triangular section above one ear.



Step 4 Using foil to separate from the remainder of the hair, apply formula A to each of the triangular sections, applying from roots to ends.



Step 5 Apply formula B in-between the triangle sections to all of the remaining hair. Apply from roots to ends.

PRODUCT	FORMULA	FOIL COLOR	SHADE	MIXING RATIO
WELLA COLOR CHARM	A	SILVER	6A / 462	1+2 20 VOL
WELLA COLOR CHARM	B		5G / 435	1+2 20 VOL